



11th Baltic Sea Geotechnical Conference

GEO TECHNICS IN MARITIME ENGINEERING

Gdansk, Poland
15–18 September 2008



ISSMGE

International Society for Soil Mechanics
and Geotechnical Engineering



Polish Committee on Geotechnics



Gdansk University of Technology



11th Baltic Sea Geotechnical Conference



Invitation

On behalf of the ISSMGE, the Polish Committee on Geotechnics and Gdansk University of Technology (Department of Geotechnics, Geology and Maritime Engineering) we invite you to participate in the 11th Baltic Sea Geotechnical Conference, which will be held in Gdansk, 15-18 September 2008.

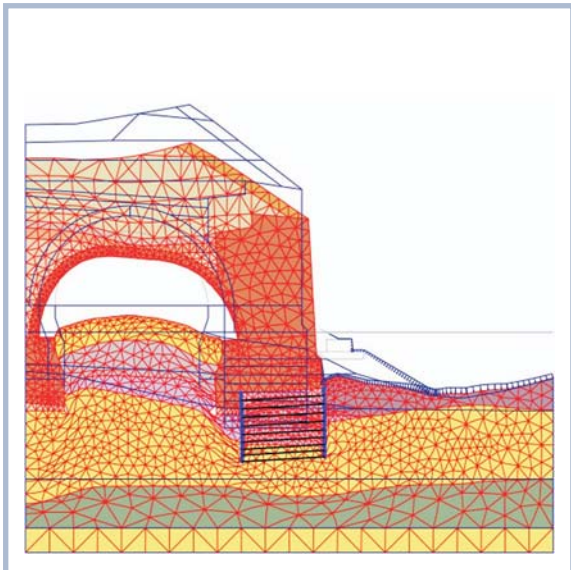
Baltic Conference for the second time in Gdansk

It is the second time the Baltic Sea Geotechnical Conference is organised in Gdansk by our University. The 1st Baltic Conference was also held in Gdansk in 1975. The Chairman of that conference was Prof. Eugeniusz Dembicki, who is currently the Chairman of the International Scientific Committee. The conference in 1975 was very successful. Now history is repeating itself and the 11th Baltic Sea Geotechnical Conference is once again held in Gdansk.

It is a special honour and responsibility to organise the Geotechnical Conference again in the place where it started. Up to now we have received more than 150 paper abstracts and declarations from many countries of the world. We promise to offer very interesting sessions and discussions during the Conference and attractive technical and tourist visits, as well as an interesting social and cultural programme. We hope you will be able to join us in September 2008 and spend your time in a very fruitful and enjoyable way.

The goals and scope of the conference

The 11th Baltic Sea Geotechnical Conference is devoted to onshore and offshore maritime engineering. These activities are still developing rapidly all over the world. Construction problems always occur in association with complexities related to geotechnical conditions. Geotechnical design in maritime engineering requires knowledge of many aspects of soil-structure interaction as well as the behaviour of different types of soils. Years of practice by individual engineers and researchers in this discipline has produced a great deal of valuable knowledge. Therefore it is very important to exchange such experiences at an international level.



Important dates

Acceptance of abstracts: January 31, 2008

Deadline for full papers: March 31, 2008

Review and acceptance of full papers: April 30, 2008

Exhibitions

An exhibition will be held in the main Conference hall, offering an opportunity for organizations and companies to display their products and services. More details about the exhibition can be found on the conference website.

Official Language

The official language of the Conference is English.



Conference format

We would like to announce that the Conference form has been slightly modified. The Organizing Committee of the 11th Baltic Sea Geotechnical Conference together with the Presidents of ISSMGE and the Polish Committee on Geotechnics have decided to introduce some oral presentations to the sessions. Papers, chosen by the International Scientific Committee, will be indicated for oral presentation. Therefore during each session following invited lecture oral presentations of selected papers will come out. Authors of the selected papers will be informed on time by an individual mail. Papers chosen for the poster session remain firm.

Papers format

Papers for the Conference should be prepared as “camera ready”. All papers should be written in MS Word and should be submitted either by e-mail or on a CD-ROM in both MS Word and PDF format. All papers will be reviewed.

Proceedings

The proceedings of the 11th Baltic Sea Geotechnical Conference will be distributed in a printed version plus on a CD-ROM to all participants. The printed versions will only be produced in black and white or grey scale, whereas with the CD-ROM version there is an opportunity to use colours if such an electronic version is provided by the authors.

Technical visits

Two technical visits are planned during the Conference:

TV1 – presentation of ground improvement by the microblasting method on a trial field by Polbud-Pomorze Company – one of the conference sponsors

TV2 – a boat tour around Gdańsk and Gdynia sea harbours.

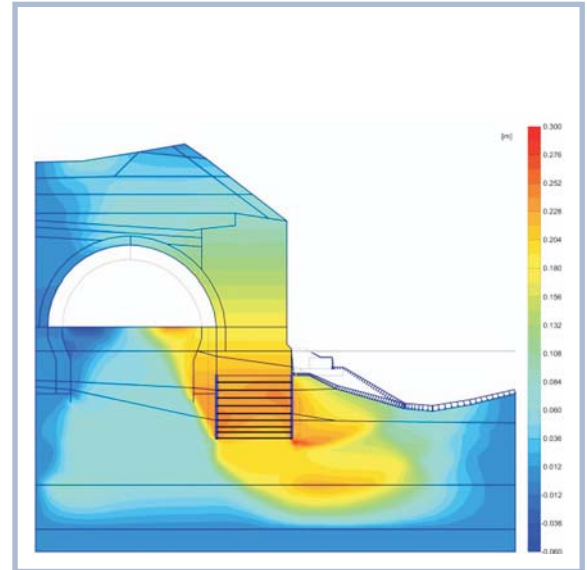
Technical visits will be organized on the last day of the Conference, Thursday, September 18th at 10:00 am. Lunch will be provided between TV1 and TV2.

Social and cultural programme

- Monday, September 15th, 20:00 – Cultural event – opera and symphonic concerto at the Gdansk University of Technology Auditorium Novum,
- Tuesday, September 16th, 20:00 – Banquet at Hotel Hevelius.

Programme for accompanying persons

- Monday, September 15th - Visiting the Old Town of Gdansk, Oliwa and Sopot,
- Tuesday, September 16th - Visit to the Teutonic Castle and Museum in Malbork (www.zamek.malbork.pl),
- Wednesday, September 17th – Visit to “Kashubian Switzerland”.





11th Baltic Sea Geotechnical Conference

Conference time schedule

Sunday 14th September 2008

9:00 - 20:00 Registration

Monday 15th September 2008

8:00 - 9:00 Registration

9:00 - 10:30 **OPENING CEREMONY**

10:30 - 11:00 Coffee break

11:00 - 13:00 **SESSION 1: Practice in maritime geotechnical engineering**
Chairpersons: P. Seco e Pinto (Portugal), K. Schjetne (Norway)
Invited lecture: J. S. Steenfelt (Denmark)

13:00 - 14:30 Lunch

14:00 - 15:45 **EXHIBITION PRESENTATION SESSION**
Chairpersons: T. Tarkkio (Finland), A. Szymański (Poland)

15:45 - 16:15 Coffee break

16:15 - 18:00 **POSTER PRESENTATION SESSION**
Chairpersons: W. Wolski (Poland), E. Flavigny (France)

18:00 - 19:30 **Meeting of representatives of the Baltic Sea ISSMGE Societies**

20:00 **CULTURAL EVENT**

Tuesday 16th September 2008

9:00 - 10:45 **SESSION 2: Laboratory testing**
Chairpersons: M. Jamiolkowski (Italy), J. H. Gravgaard (Denmark)
Invited lecture: S. Lacasse (Norway)

10:45 - 11:15 Coffee break

11:15 - 13:00 **SESSION 3: Site characterization and in situ testing**
Chairpersons: R. Frank (France), Z. Młynarek (Poland)
Invited lecture: P. Mayne (USA)



13:00 - 14:30	Lunch
14:30 - 16:15	SESSION 4: Foundation of onshore and near shore structures Chairpersons: W. Van Impe (Belgium), E. Dembicki (Poland), W. Sondermann (Germany) Invited lecture: J. Grabe (Germany)
16:15 - 19:00	SESSION 5: Workshop of TC1 on „Influence of climate change on dike technology and coastal engineering” Chairpersons: I. Vanicek (The Czech Republic), V. Celmiņš (Latvia) Introductory lecture: M. Van (The Netherlands)
20:00	BANQUET

Wednesday 17th September 2008

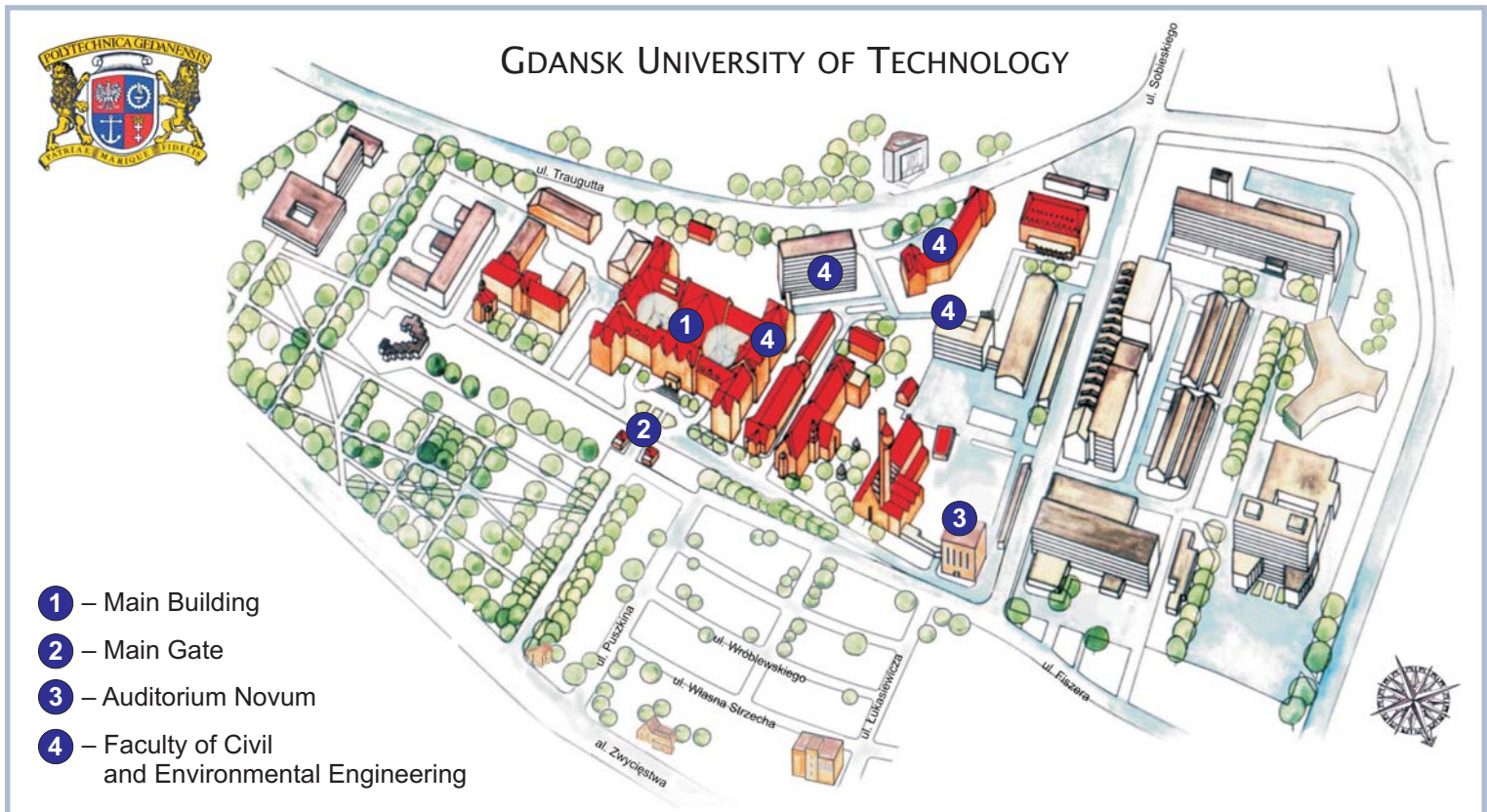
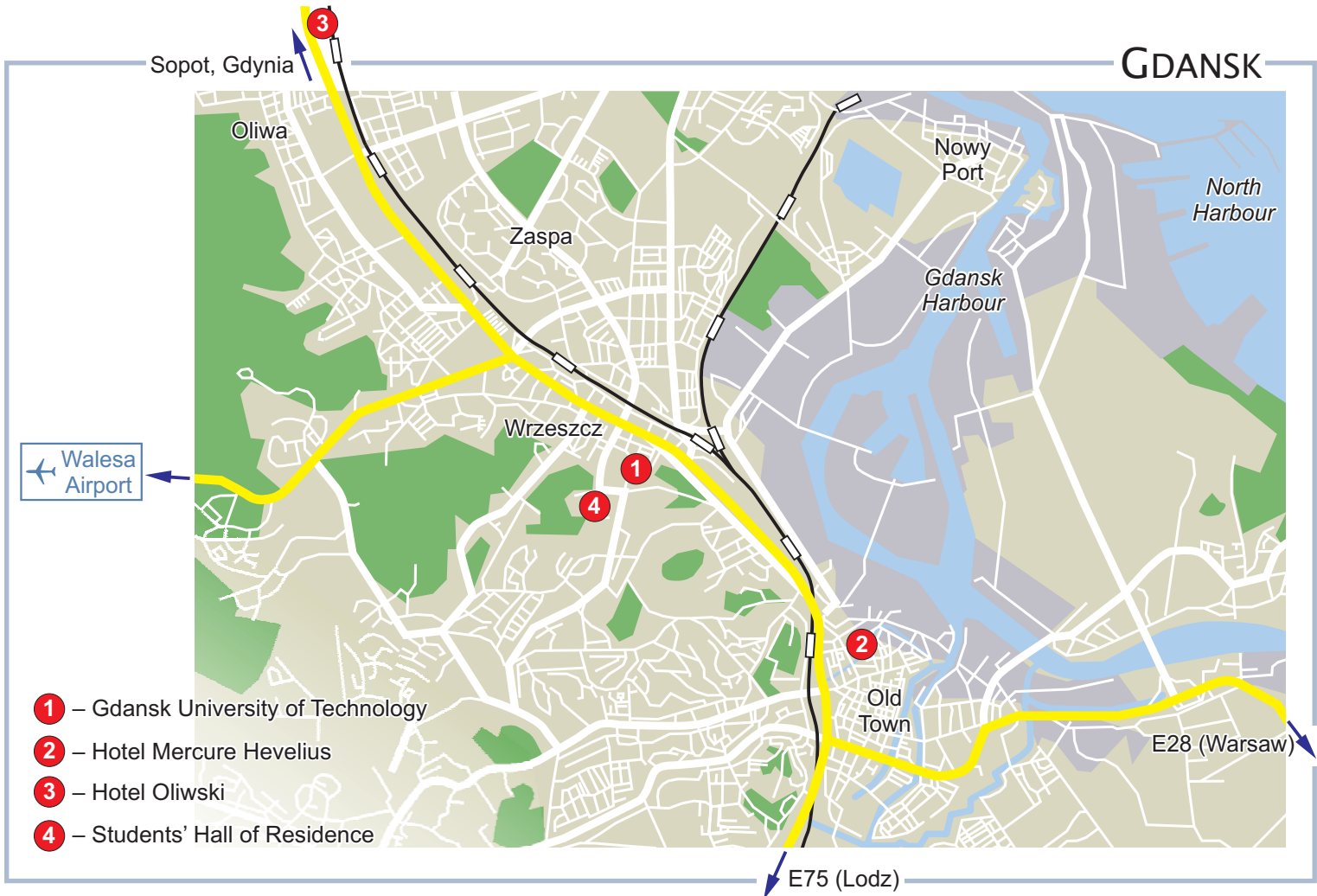
9:00 - 10:45	SESSION 6: Theoretical solutions and numerical modeling Chairpersons: M. Nußbaumer (Germany), M. Gryczmański (Poland) Invited lecture: M. Cudny, A. Niemunis (Poland)
10:45 - 11:15	Coffee break
11:15 - 13:00	SESSION 7: Environmental geotechnical engineering Chairpersons: A. Gaberc (Slovenia), L. Furmonavičius (Lithuania) Invited lecture: H. Brandl (Austria)
13:00 - 14:30	Lunch
14:30 - 17:00	SESSION 8: Workshop on standards and recommendations for maritime geotechnical engineering Chairpersons: V. Ilyichev (Russia), M. Mets (Estonia) Invited lecture: B. Schuppener (Germany)
17:00	CLOSING CEREMONY

Thursday 18th September 2008

10:00	Technical visits
-------	-------------------------



11th Baltic Sea Geotechnical Conference



Venue and accommodation

The Conference will be held in the centre of Gdansk in the hall of the Gdansk University of Technology main building.

We offer accommodation in two very attractive hotels in Gdańsk: Hotel Hevelius, located in the Old Town and Hotel Oliwski, located in another scenic part of Gdansk. Accommodation can also be provided at the Students' Hall of Residence as well as at other hotels.

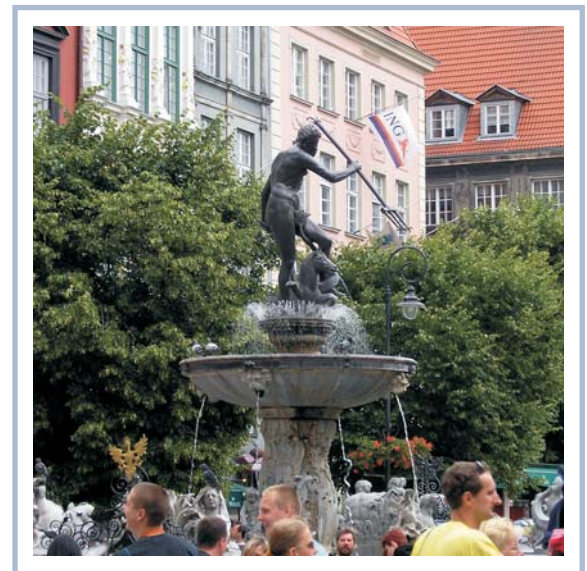
More details about accommodation is given on the conference website.

Registration and accommodation fee

In order to register, please fill out the Registration Form given on the conference website. Please register on-line through the official website.

Participation is subject to proper registration and confirmed payment.

The Conference Secretariat will e-mail participants to confirm that registration has been accepted and that their payment has been received.



Registration fees	Before May 15th, 2008	After May 15th, 2008
Participant	450 €	500 €
ISSMGE Member	400 €	450 €
Accompanying person or student	270 €	300 €

Registration fees covers all activities of the Conference excluding accommodation costs

Accommodation fees	Single room per night	Double room per night
Hotel Mercure Hevelius	400 PLN	430 PLN
Hotel Oliwski	225 PLN	255 PLN
Students' Hall of Residence	70 PLN	90 PLN

1 PLN ≈ 0.2782 € – medium exchange rate from January 10th, 2008
1 € ≈ 3.5940 PLN



11th Baltic Sea Geotechnical Conference

Committees

International Advisory Committee

- Zbigniew Młynarek, Chairman, President of PCG
- Pedro Seco e Pinto, Core Member, President of ISSMGE
- Roger Frank, Core Member, vice President of ISSMGE for Europe
- Neil R. Taylor, Core Member, Secretary General of ISSMGE
- Mait Mets, Chairman of 10th Baltic Sea Geotechnical Conference
- Meindert Van, Chairman of TC-1 ISSMGE
- Mario Manassero, Chairman of TC-5 ISSMGE
- Paul Mayne, Chairman of TC-16 ISSMGE
- Rolf Katzenbach, Chairman of TC-18 ISSMGE
- Zygmunt Meyer, Technical University of Szczecin

International Scientific Committee

- Eugeniusz Dembicki, Chairman, Honorary President of PCG
- Anne Braaten
- Valters Celmiņš
- Hakan Garin
- Vyacheslav Ilyichev
- Suzanne Lacasse
- Silvano Marchetti
- Manfred Nußbaumer
- Jørgen Steenfelt
- Hardi Torn
- Wojciech Wolski
- Hainz Brandl
- Liudas Furmonavičius
- Georg Heerten
- Michele Jamiołkowski
- Tom Lunne
- Rainer Massarsch
- Antonio Soriano
- Tarmo Tarkkio
- William Van Impe

Organizing Committee

- Zbigniew Sikora, Chairman
- Kazimierz Gwizdała
- Bohdan Zadroga
- Lech Bałachowski
- Marcin Cudny
- Grzegorz Horodecki
- Arkadiusz Kryczka
- Rafał Michalak
- Zbigniew Młynarek, Chairman
- Zbigniew Lechowicz
- Tadeusz Brzozowski
- Angelika Duszyńska
- Adam Krasiński
- Krzysztof Malesiński
- Rafał Ossowski

Sponsors

The strategic sponsor of the Conference is KELLER Polska. Many companies have declared their sponsorship, but new sponsors are also very welcome.

Correspondence:

On organizational issues:

Gdansk University of Technology
Faculty of Civil and Environmental Engineering
Department of Geotechnics, Geology and Maritime Engineering
G. Narutowicza St. No. 11/12, 80-952 Gdansk, Poland
Tel.: +48 58 347 18 30, Fax: +48 58 347 19 33
E-mail: 11bc@pg.gda.pl, web: www.11bc.pg.gda.pl

On scientific programme issues:

Polish Committee on Geotechnics (PCG)
Office of President of PCG
Podolska St. No. 27A, 60-615 Poznan, Poland
Tel.: +48 61 847 09 25, Fax: +48 61 848 33 17
E-mail: mlynarek.hebo@wp.pl

